



# **BASE Academy Trust**

**Business Continuity Plan**

**For**

**Disaster Recovery in the event of a Critical Incident**

**September 2020**

## Table of Contents

1.0	Introduction .....	3
2.0	Definitions .....	3
3.0	General Information .....	3
3.1	Review and Training .....	3
3.2	Associated Documents/information .....	3
3.3	Emergency Contact Information .....	3
3.4	IT Arrangements and Secure Off Site Storage of Documents .....	4
4.0	Aims and Objectives .....	4
5.0	Strategy .....	4
6.0	Roles and Responsibilities .....	6
6.1	Executive Headteacher .....	6
6.2	Incident Management Team (IMT) .....	7
6.3	Staff .....	7
6.4	Individual Roles and Responsibilities .....	7
7.0	Initial Response In case of Major Emergency: .....	9
8.0	Procedure for Closing a School in the Multi Academy Trust .....	9
8.1	Closure in advance of a School day .....	9
8.2	Closure during a School Day .....	9
8.3	Immediate Places of Safety .....	10
8.4	Off-Site Place of Safety .....	10
9.0	Evacuation Policy & Procedure .....	10
9.1	Grab Packs .....	10
9.2	Site Plans and Map of Local Area .....	10
10.0	Invacuation Policy & Procedure .....	10
11.0	Silent Evacuation .....	11
12.0	Business Recovery in the Event of a Loss of Buildings or site Space .....	11
12.1	General .....	11
12.2	Insurance .....	11
12.3	Replacement Site Facilities .....	11
13.0	Pandemic Threat / Mass Staff Unavailability .....	11
14.0	Other Threats .....	12
15.0	Draft Recovery Action Plans .....	13
16.0	Business Continuity Plan Checklist .....	14
16.1	Immediate Incident Checklist – People Related .....	15
16.2	Immediate Incident Checklist – Property Related ( <i>and on-going action flowing</i> ) .....	17
16.3	Various Templates .....	19
16.4	Accident Form .....	25

## 1.0 Introduction

The BASE Academy Business Continuity Plan (BCP) has been written for those who will be involved in re-establishing the operational delivery of services following a major incident at Red Lane Primary School or Masfield Primary School. It should be read in conjunction with:

- Individual detailed plans for both schools
- The Academy's fire evacuation plans for both schools (the operation of which does not necessarily activate the BCP).

## 2.0 Definitions

An emergency is any event which causes, or has the potential to cause injury, loss of life, damage to property or significant business disruption.

***A disaster is the escalation of an emergency to the point where normal conditions are not expected to be recovered for at least 24 hours.***

## 3.0 General Information

### 3.1 Review and Training

This document should be reviewed annually by the Leadership Teams and the Academy Trust Board and shared with staff during inset sessions and governors during committee meetings. Parts of the plan should be tested throughout the school year.

### 3.2 Associated Documents/information

Associated Documents include:

- BASE Business Continuity Plan
- Fire Evacuation Plans including site plans
- Invacuation Policy & Procedures
- Fire risk assessments
- Snow Chains
- First Aid Policies/First Aid Needs Assessments
- Health & Safety Policy & Procedures
- Pandemic sickness
- Inventory/Asset Register

### 3.3 Emergency Contact Information

An emergency information file is kept in the main offices of Red Lane Primary and Masfield Primary and includes:

- Copies of this document
- Copies of associated documents
- Hard copies of pupil data (those on roll) with parental information, addresses and contact numbers. (printed termly)
- Class reports detailing medical information for pupils on roll. (printed termly)
- Hard copies of current staff data with addresses, next of kin and contact numbers.

### **3.4 IT Arrangements and Secure Off Site Storage of Documents**

The school servers are located:

- Red Lane Primary School – Library KS2 building
- Masefield Primary School – Executive Headteacher's Office

Within the Schools' ICT SLA with Bolton LA, the school servers from both schools are backed up on a daily basis to a location off site.

Copies of this plan and supporting documents are held at both schools.

A USB memory stick containing the information is kept at the Finance Manager's home.

## **4.0 Aims and Objectives**

The aim of this emergency response plan is to mitigate the effects of any emergency situation on the school, staff and pupils and recover from any incident quickly and efficiently. The supporting objectives are to:

- Prevent/minimise the loss of life, injury and ill health to pupils and staff;
- Alert and work with relevant parties as necessary to provide guidance and reassurance e.g. Emergency Services, Bolton Local Authority, Governors and Parent/Carers;
- Manage the situation until the relevant support arrives;
- Minimise disruption to the normal daily routine of staff and pupils;
- Ensure appropriate working with the media and support staff, pupils and parent/carers in the aftermath of the incident.

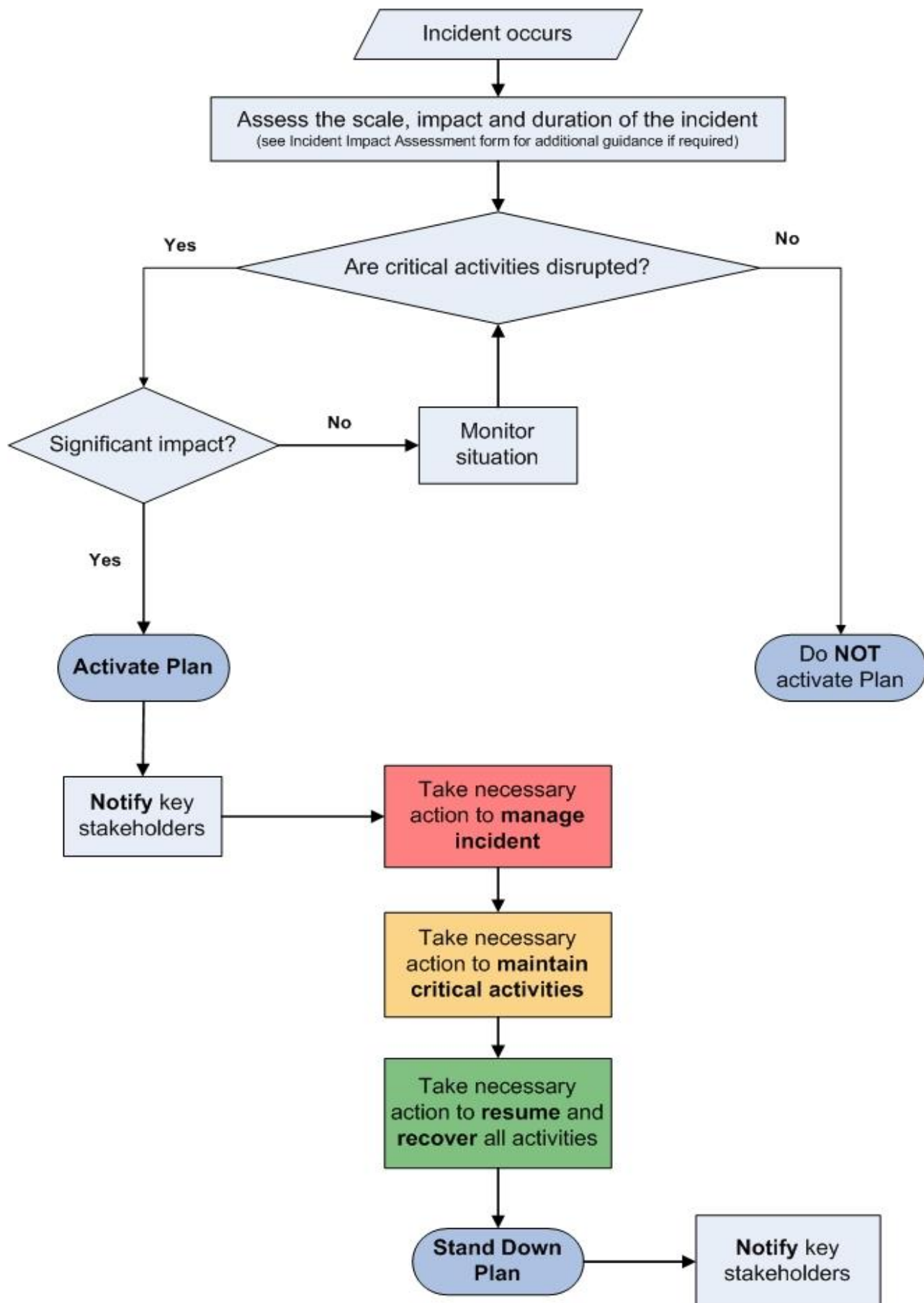
Further guidance is available on the department for Education website

<https://www.gov.uk/guidance/emergencies-and-severe-weather-schools-and-early-years-settings>

## **5.0 Strategy**

If a disaster is declared by BASE ACADEMY's Principal or their deputy and/or BASE Academy's Account Director, both Red Lane's Business Continuity Plan and Masefield Primary's Business Continuity Plan will be activated.

## PLAN ACTIVATION PROCESS



Staff communication will be via Teacher2Parents, email and the website if this is operable, or by use of the snow plan telephone lists if not.

The following organisations may need to be advised of the implementation of the Business Continuity Plan as soon as possible:

• Emergency Services	999
• Public Health England (Significant disease outbreak)	0344 225 0562 Option 3
• Media Office –Karen Spibey (Reputational Incident)	01204 332064/07824 541215
• Extranet (Extreme Weather)	<a href="https://extranet.bolton.gov.uk/">https://extranet.bolton.gov.uk/</a>
• Information Management – Paul Rankin (Significant Information Security Breach)	01204 332077/07392 108201 <a href="mailto:paul.rankin@bolton.gov.uk">paul.rankin@bolton.gov.uk</a>
• Dr Tony Birch – Assistant Director Education & Learning – Bolton Council	01204 332011/07789 031875 <a href="mailto:tony.birch@bolton.gov.uk">tony.birch@bolton.gov.uk</a>
• Bolton Council Security & Response	01204 336900
• Asset Management Unit	01204 331367
• Corporate Property Services (out of office hours)	01204 331234 or 01204 336900
• Health and Safety Advisors	01204 336968
• Environmental Health	01204 338060
• CISS (Educational Psychologists)	01204 336500/1
• Health and Safety Executive (fatal/major incidents only)	0345 300 9923
• Insurance Advisors -RPA	0117 976 9361
• RPA – Urgent Incident notification	0113 246 2040 <a href="mailto:RPAadvice@willis.com">RPAadvice@willis.com</a> & <a href="http://www.dfeclaimforms.co.uk">www.dfeclaimforms.co.uk</a>
• Local Police (Central)	0161 872 5050/101
• Greater Manchester Fire & Rescue	0161 736 5866
• United Utilities	0345 672 3723
• Electricity North West	0800 195 4141
• British Gas	0800 111 999
• Foreign Office	020 7270 1500
• Public Health England	0344 225 0562 (Option 3)
• Information Commissioner’s Office	0303 123 1113

## 6.0 Roles and Responsibilities

### 6.1 Executive Headteacher

The Executive Headteacher is responsible for the implementation and co-ordination of the BCP, including:

- Immediately contacting the BASE Account Director if the disaster relates to the built environment or the ICT infrastructure to establish if the building can be re-occupied and/or service delivery reinstated
- Co-ordination of status reports/communication for the benefit of all audiences (including staff, pupils, parents, LA, Academies Team at DfE, press)
- Maintaining the BCP in an up-to-date format by delegating responsibility to the Finance Director for updates.

## **6.2 Incident Management Team (IMT)**

Lead by the Executive Headteacher, the Incident Management Team includes Heads of both schools, all Assistant and Deputy Headteachers and the Schools' Site Manager/s. Additional members of the team will be recruited to match the specific needs of the incident.

The IMT is responsible for acting under the direction of the Executive Headteacher (or their Deputy) to restore normal conditions as soon as possible.

## **6.3 Staff**

Staff are required to co-operate with the IMT in support of the BCP.

In the event that staff are sent home, they should remain available during normal working hours to assist with necessary tasks.

## **6.4 Individual Roles and Responsibilities**

<b>Role</b>	<b>Responsibility</b>	<b>Person(s) Responsible</b>
Incident Manager	<ul style="list-style-type: none"><li>• Consider the need to alert other colleagues and external agencies</li><li>• Establish an Emergency Response Team and allocate roles</li><li>• Collate all relevant information relating to the emergency</li><li>• Co-ordinate the emergency response strategy, liaising with relevant agencies as appropriate</li><li>• Evacuate buildings/close school as necessary</li><li>• Monitor the emergency response</li><li>• Provide regular staff/team briefings</li><li>• Authorise any additional expenditure</li></ul>	Executive Headteacher
Deputy Incident Manager	<ul style="list-style-type: none"><li>• Assists Incident Manager</li><li>• Co-ordinates and manages staff in the Emergency Response Team</li><li>• Monitors staff welfare and organises staff roster</li></ul>	Head of School
Parent/Carer Liaison Officer(s)	<ul style="list-style-type: none"><li>• Advises parents/carers and provide information</li><li>• Provides a point of contact</li><li>• Arranges on Site co-ordination of visiting parents and carers</li><li>• Maintain regular contact with parents and carers where appropriate</li></ul>	Assistant Headteacher/Deputy Headteacher
Administrators	<ul style="list-style-type: none"><li>• Staff the telephone lines</li><li>• Help collate information</li><li>• Relay incoming and outgoing messages by phone, fax email and text etc. as appropriate in a prompt manner</li><li>• Provide admin support to the Incident Manager and Deputy Incident Manager</li><li>• Maintain a log of key events and decisions including expenses incurred</li></ul>	Finance Manager, Office Manager & Office Staff
Communications Officer/Media Spokesperson	<ul style="list-style-type: none"><li>• Acts as point of contact for media enquiries</li><li>• Work with the LA's communications team to prepare media statements/interviews</li><li>• Assist with internal communications</li></ul>	Executive Headteacher

Teachers/Teaching Assistants	<ul style="list-style-type: none"> <li>• Maintain supervision</li> <li>• Ensure the safety and security of pupils</li> <li>• Provide information and offer reassurance</li> <li>• Take roll call where necessary</li> <li>• Monitor pupils' physical and psychological welfare</li> </ul>	Teaching and Support Staff
Facilities Manager	<ul style="list-style-type: none"> <li>• Ensure site security at all times</li> <li>• Provide information about site facilities/layout as necessary</li> <li>• Assist with access/egress to the school</li> </ul>	Site Manager and Caretaking Staff
Liaison Officer	<ul style="list-style-type: none"> <li>• Communicate with colleagues at school on a regular basis during the incident and receive updates/progress reports</li> <li>• Relay information to and from the local authority</li> </ul>	Executive Headteacher Head of School School Business Manager



## 7.0 Initial Response In case of Major Emergency:

The staff member witnessing or first discovering the emergency situation will be responsible for initiating the immediate response to the threat. This may involve:

- Summoning help/calling the emergency services
- Taking charge of the scene until further support arrives
- Securing immediate welfare of students and staff e.g. shelter/evacuation
- Alert Executive Headteacher/Head of School or other senior member of staff in their absence.
- Log relevant information e.g. location and time of emergency, details of people involved and nature of any injuries and a summary of events etc.

Once the initial alert has been made, consideration must be given to who else should be informed so it is imperative that contact details for staff, parents & carers, governors and LA departments are kept up to date and are readily accessible.

A cascade system of alerting relevant persons should be considered as this allows information to be distributed quickly by several people. Please refer to the snow chains for this information.

## 8.0 Procedure for Closing a School in the Multi Academy Trust

### 8.1 *Closure in advance of a School day*

The school can be closed in advance of a normal school day using the following system:

1. Closure authorised by the Executive Headteacher or Head of School
2. Notification of a school closure using the Local Authority Extranet Website:  
<https://extranet.bolton.gov.uk> (actioned by the School Business Manager).
3. Implementing the school staff 'snow chain' (actioned by – Senior Decision Leadership Team)
4. Recording the closure on the home page of the school website (actioned by – IT Lead)
5. Sending out text messages via the 'Teacher2Parents system to all parents (actioned by – Admin Staff).

### 8.2 *Closure during a School Day*

It is never a preferred option to close the school during a school day but it can be done using the following procedures:

1. Closure authorised by the Executive Headteacher or Head of School on the basis that pupils with parental authorisation may make their way home by themselves. Pupils will continue to be supervised by staff until parents authorise them to leave or they are collected.
  - a. Parental authorisation can be provided by phone or email. Consider use of Places of Safety (as described below).
2. Notification of a school closure using the Local Authority Extranet Website:  
<https://extranet.bolton.gov.uk> (actioned by the School Business Manager).
3. Recording the closure on the home page of the school website (actioned by – IT Lead).  
Sending out text messages via the 'Teacher2Parents system to all parents (actioned by – Admin Staff).

### **8.3 Immediate Places of Safety**

In the event of a major incident on site requiring the school to be closed, students will assemble at the primary assembly points – school playground. If these are not useable staff will escort pupils to the secondary assembly points – school field.

- a map of the school grounds showing primary and secondary assembly points, field and staff car park respectively. (see fire evacuation plan for each school)
- A map of the local area. (see fire evacuation plan for each school)

### **8.4 Off-Site Place of Safety**

If it becomes necessary to evacuate the site completely, pupils will be escorted into the grounds of Ladywood School for Masfield and Mosley Pub Car Park for Red Lane from where they can be collected or from where they can be released to make their own way home.

## **9.0 Evacuation Policy & Procedure**

In the event that the school buildings need to be evacuated in an emergency please refer to the Fire Evacuation Plans for each school.

### **9.1 Grab Packs**

Each school retains, alongside the Business Continuity File, a grab pack containing the following items. The Finance Manager / School Business Manager will check the contents on a 6 monthly basis.

Contents of Grab Pack include:

- A High Visibility Vest
- Pen / Paper / Clipboard
- Local Map
- Torch
- Whistle
- First Aid Supplies

### **9.2 Site Plans and Map of Local Area**

Within the Fire Evacuation Plan can be found plans detailing the following:-

- Fire Call Points, Fire Extinguishers, Emergency Lighting and Assembly locations
- Chemical Stores
- Boiler house(s)
- Gas, Electricity and Water Services cut off points

## **10.0 Invacuation Policy & Procedure**

It is now possible to envisage circumstances where the school may wish to lock itself in, to secure staff and pupils from an outside threat. This circumstance is described as a 'lockdown'. Please refer to each school's Invacuation policy and procedures.

## **11.0 Silent Evacuation**

Notification of a silent evacuation would be made by word-of-mouth by the Head of School, members of the SLT and the admin staff.

## **12.0 Business Recovery in the Event of a Loss of Buildings or site Space**

### ***12.1 General***

Replacement of the buildings and facilities that have been damaged or made unavailable will be the responsibility of the PFI Contractor and the Local Authority. In the event of building unavailability, the school will be entitled to financial unavailability deductions to off-set the Unitary Charge Payments that will still be due for payment.

Temporary working facilities are the responsibility of the School and Academy Trust for which it holds insurance (see below).

### ***12.2 Insurance***

BASE Multi Academy Trust hold insurance to the value of £10,000,000 for any one loss (maximum) to cover the cost for business interruption or interference following a material damage loss.

### ***12.3 Replacement Site Facilities***

The size and scope of facilities required for the school will vary according to circumstance. In the first instance contact should be made with the RPA Insurance on 0117 976 9361 or [RPAAdvice@willis.com](mailto:RPAAdvice@willis.com)

The location of the temporary accommodation will be determined based on the space required and circumstances at the time. Two possible locations that have been identified for consideration should temporary accommodation / buildings need to be sited are:

- Contacting Bolton LA to see if they can provide temporary accommodation within any other schools in Bolton.
- Porta cabins situation elsewhere on the school grounds

Erecting additional buildings on our current campus site will always be the preferred solution.

## **13.0 Pandemic Threat / Mass Staff Unavailability**

Loss of staff is considered a generic threat to operations. The spread of a virus capable of impacting on operational service delivery is now considered genuine and serious.

In the event of mass staff illness, the IMT will shut the school to pupils using the same procedures described above.

## **In the Event of a Pandemic**

The timing of any health pandemic onset is highly unpredictable. In the event of a pandemic, schools will have a key role to play in reducing the risk to stakeholder's health and safety as far as possible as well as maintaining essential operations as directed by the UK Government.

Given the highly uncertain nature of a health pandemic, we cannot know in advance how serious it will be and who will be most affected. The Academy Trust will follow guidance and direction from the UK Government, Local Authority and Public Health England with regard to the maintenance or adaptation to operations.

With regards to an influenza pandemic, The UK influenza Pandemic Contingency Plan contains information on the types of scenarios which may arise. The plan offers some initial ideas and guidance to assist the Trust in developing and reviewing plans. It identifies important and specific activities which organisations can do to prepare for a pandemic as well as where more general guidance will be provided by the Government. This checklist is not exhaustive but is a guide which may be used in order to start thinking about what may need to be planned for.

## **14.0 Other Threats**

The following Other Threats have been considered

- Phone and ICT Communications Loss
- Finance Process Breakdown – payments to staff & suppliers fail
- Utilities / Energy Supply failure
- Service Delivery Loss of General Nature – BASE Academy are unable to provide buildings or ICT support
- Key Supplier Failure other than BASE Academy – Catering, transport
- Evacuation due to Nearby Incident
- Bad Weather prolonged
- Strikes
- Terrorist Attack or Threat

## 15.0 Draft Recovery Action Plans

Operational Threat	Steps to Restore Normal Working	Action by Whom	Comments/Notes
Phone and ICT Communications Loss	1.		
Finance Process Breakdown – payments to staff & suppliers fail			
Utilities / Energy Supply failure	1.		
Building Loss – partial or complete (Fire, Flood etc.)	1.		
Building Denial leading to short term lack of access	1.		
Service Delivery Loss of General Nature – BASE Academy are unable to provide buildings or ICT support	1.		
Key Supplier Failure other than BASE Academy – e.g. Catering, transport	1.		
Evacuation due to Nearby Incident	1.		
Lockdown due to Nearby Incident	1.		
Fire	1.		
Bad Weather prolonged			
Strikes	1.		
Terrorist Attack or Threat			

## 16.0 Business Continuity Plan Checklist

Point to Consider	YES	NO	Comments/Action
Does the school have an Incident Management Team (IMT)?			
Has the IMT established roles and responsibilities?			
Has the school emergency response plan been implemented after discussions with staff?			
Are procedure established to ensure contact details are maintained and updated for: <ul style="list-style-type: none"> <li>• Parents/Carers</li> <li>• Staff</li> <li>• Pupils</li> <li>• Governors</li> <li>• LA Departments</li> <li>• Peripatetic Staff</li> </ul>			
Do you perform daily back-ups of your IT systems and are these kept off site?			
Is a copy of the assets register kept off site?			
Are archived school records kept in a secure and accessible place?			
Is a fireproof safe used for relevant records?			
Do you have site plans showing gas/water/electricity cut-off locations?			
Are details of staff/pupils on Educations visits and work experience known to relevant staff?			
Have local hazards been identified e.g. train lines, major roads, neighbouring industrial estates etc.?			
Are there procedures for inclement weather and dealing with flooding in place?			
Have risk assessments been undertaken and control measures implemented to reduce risks?			
Have precautions been taken to reduce the threat of arson?			
Do relevant staff have suitable grab packs?			
Does the school have suitable arrangements for out of hours emergencies?			
Does the school have an off-site evacuation contingency plan?			
Are arrangements in place to introduce counselling to pupils, staff, parents and carers as necessary?			

## 16.1 IMMEDIATE INCIDENT CHECKLIST – PEOPLE RELATED

### Major incident involving people

• Death of a pupil or member of staff
• Abducted/missing pupil
• Assault causing serious injury
• Transport incident involving school visit/journey
• Communicable Disease
• Food poisoning

<b>Death of a pupil or member of staff on site</b>	
<b>Action</b>	<b>Action Taken ( 4 )</b>
Withdraw the pupils to a secure controlled area	
Secure site i.e. electricity, gas, water etc. if due to an accident	
Contact emergency services	
Inform next of kin	
Inform person in charge (Head Teacher)	
Notify LA	
Inform Chair of Governors	
Ensure safety /welfare of other pupils and staff	
Complete accident book	
Investigate circumstances	

<b>Abducted /missing pupil</b>	
<b>Action</b>	<b>Action Taken ( 4 )</b>
Inform person in charge (Head Teacher)	
Inform police	
Notify next of kin	
Notify LA	
Attend to emotional welfare of pupils and staff	
Notify Chair of Governors	
Update school registration details	

<b>Assault causing serious injury</b>	
<b>Action</b>	<b>Action Taken ( 4 )</b>
Administer first aid and contact emergency services	
Secure site for investigation	
Inform person in charge (Head Teacher)	
Inform next of kin	
Inform Asset Management Unit	
Inform Chair of Governors	
Complete serious incident forms	
Ensure safety /welfare of pupils and staff	

<b>Transport incident involving school visit/journey</b>	
<b>Action</b>	<b>Action Taken ( 4 )</b>
Establish the nature and extent of the incident	
If an injury – assess injury (preferably by first aider)	
Contact emergency services	
Ensure all other members of the group are accounted for	
Ensure all other members are safe from danger and looked after	
Inform person in charge – giving full information of incident	
Person in charge (Head Teacher) to oversee situation from school	
Confirm hospital details	
If serious incident inform LA	
Inform Chair of Governors	
Make arrangements for return of group to base or home	
Contact place of visit and inform them of the situation	
Obtain a police report	
Obtain insurance information	

<b>Communicable Disease - only classed as an outbreak if more than one case</b>	
<b>Action</b>	<b>Action Taken ( 4 )</b>
Inform person in charge (Head Teacher)	
Contact and liaise with Health & Safety Department within LA	
Contact School Nurse	
Inform Chair of Governors	
School nurse and /or LA to advise re: letters to parents	
Attend to emotional welfare of pupils and staff	

<b>Food Poisoning</b>	
<b>Action</b>	<b>Action Taken ( 4 )</b>
Inform person in charge (Head Teacher)	
Identify who is affected and assess severity of the illness	
Continue observation of casualty or casualties	
Administer first aid as required	
Contact next of kin and advise hospital details	
Contact Health Team – Consumer Protection Department giving full information	
If serious outbreak inform LA	
Inform Chair of Governors	
Exclude affected people from school where necessary	
Identify cause of illness to avoid a reoccurrence	



## 16.2 IMMEDIATE INCIDENT CHECKLIST – PROPERTY RELATED

### Major incident related to property

• Widespread structural damage
• Major fire
• Terrorist incident

<b>Widespread structural damage</b>	
<b>Action</b>	<b>Action Taken ( 4 )</b>
Evacuate the premises	
Take a roll call	
Call emergency services	
Ensure person in charge informed (Head Teacher)	
Decide whether to keep pupils in school or send home	
Provide information to parents via phone /letter	
Inform LA	
Inform Chair of Governors	
Ensure no unauthorised persons gain access to the site	
Contact Corporate Property Services/Building Officer/Asset Management to assess damage	
Strictly control access to the damaged building	

<b>Major fire</b>	
<b>Action</b>	<b>Action Taken ( 4 )</b>
Ensure safety of pupils, staff and visitors by following schools evacuation procedures – Option to move to the Secondary Evacuation Point	
Ensure person in charge is informed (Head Teacher)	
Ensure safety and security of premises	
Staff /pupils must not be allowed to re-enter the building until emergency services allow them to do so	
Advise the LEA /Insurance Department	
Contact Corporate Property Services/Building Officer/Asset Management to assess damage	
Close the school if necessary	
Advise the Chair of Governors	

<b>Terrorist incident</b>	
<b>Action</b>	<b>Action Taken ( 4 )</b>
For bomb scares and gas leaks implement standard fire evacuation procedures – Option to move to the Secondary Evacuation Point	
Inform everyone that <b>MOBILE PHONES MUST NOT BE USED</b>	
Establish a safety point at a fair distance away from the school	
Ensure person in charge is informed (Head Teacher)	
Inform LA	
Inform Chair of Governors	

## ***ONGOING ACTION FOLLOWING A PROPERTY RELATED INCIDENT***

- Ensure safety of pupils and staff
- Ensure all parents, staff and governors are informed of and are aware of incident
- Evaluate damage to building and likely disruption to the education process
- Ensure safe removal of hazardous materials and debris
- Identify welfare support of pupils and staff
- Review health & safety and security /fire prevention on site
- Review the accommodation and catering
- Maintain communications with outside bodies
- Be involved in rebuilding and /or occupation of temporary premises
- Formalise the revised transport arrangements
- Prepare inventory to furnish alternative accommodation
- Inform other users of the premises
- Provide written information regarding the incident
- Hold a fire drill as soon as possible if new exit routes and assembly points are necessary
- Walk through the building to check fire escape requirements
- Re-allocate parking space and pupil areas
- Hold briefing meeting with staff
- Ensure all utilities have been checked and are functioning correctly
- Exercise caution before using electrical equipment
- IMT to maintain a brief Diary /Log of events and action taken.

## 16.3 Various Templates for Recording Information

16.3a

INCIDENT IMPACT ASSESSMENT FORM	
<b>Completed By</b>	
<b>Date</b>	
<b>Time</b>	
<b>Consideration</b>	<b>Logged Response</b>
<b>Which department/s or classes are affected?</b>	
<p>What is the nature of the incident?</p> <p><i>(Describe the type of incident, location and severity)</i></p>	
<p>Are there any staff/pupil casualties or fatalities?</p> <p><i>(Complete casualty / fatality sheets if needed)</i></p>	
<p>How is the incident currently affecting the running of your school?</p>	
<p>What is the estimated duration of the incident?</p>	
<p>Has access to the whole of the school site been denied or part of it? If so, which area/s and for how long?</p>	
<p>Have any work areas been destroyed, damaged or made unusable? Is there evidence of structural damage?</p>	
<p>Are any systems and other resources such as data unavailable?</p> <p><i>(include computer systems, telecoms and any other assets)</i></p>	



**16.3c**

[illegible]

**16.3d**

[illegible]

[illegible]

<b>Post Incident Report Form</b>		
<b>1.0 Incident Information</b>		
<b>Background</b>		
1.	Incident date	
2.	Time incident started	
3.	Time incident ended/closed	
4.	Description of incident <ul style="list-style-type: none"> <li>• What happened?</li> <li>• How each stage was dealt with</li> <li>• Involvement of other schools/organisations</li> <li>• Service recovery details</li> </ul>	
5.	Details of any casualties or fatalities	
<b>Impact Assessment</b>		
6.	Impact on school <ul style="list-style-type: none"> <li>• How long was the school affected?</li> <li>• What was the effect?</li> <li>• Any systems and other resources were unavailable? (include computer systems, telecoms, other assets)</li> </ul>	
7.	Impact on pupils <ul style="list-style-type: none"> <li>• Loss/relocation of teaching and learning?</li> <li>• Directly involved in incident?</li> </ul>	
8.	Impact on staff <ul style="list-style-type: none"> <li>• Relocated</li> <li>• Emotionally affected by incident</li> <li>• Loss of personal belongings</li> </ul>	
9.	Impact on other stakeholders	
10.	Impact on the building/site <ul style="list-style-type: none"> <li>• Were any utilities (gas, electricity or water) affected?</li> <li>• What was the effect?</li> <li>• Any work areas that were inaccessible but intact?</li> <li>• Is there evidence of structural/asset damage – or a potential insurance claim?</li> </ul>	
11.	Long term impact <ul style="list-style-type: none"> <li>• Financial loss</li> <li>• Data/file loss</li> <li>• Relocation/rebuilding</li> </ul>	

	<ul style="list-style-type: none"> <li>• Reputational impact</li> </ul>		
12.	Detail action being taken post incident to respond to its impact <ul style="list-style-type: none"> <li>• Counselling for pupils/ staff</li> <li>• Information to the community</li> <li>• Changes to procedures or relationships e.g. with suppliers</li> </ul>		
<b>Incident Communication</b>			
13.	Details of communication to pupils		
14.	Details of communication to staff		
15.	Details of communication to other stakeholders		
16.	Involvement of Manchester City Council		
17.	Details of how effective BCP was in the incident <ul style="list-style-type: none"> <li>• How successful</li> <li>• How relevant</li> <li>• Gaps</li> <li>• Areas for amendment</li> </ul>		
<b>2. Actions Resulting from Incident</b>			
	<b>Actions Needed</b>	<b>Lead</b>	<b>Timescale</b>
<b>1</b>			
<b>2</b>			
<b>3</b>			
<b>4</b>			
<b>5</b>			
<b>6</b>			
<b>7</b>			



16.3 Please remember to complete an Accident/Incident Report Form for each individual affected, as appropriate.

<b>Bolton Council</b>	<b>Accident/Incident Form</b> (including occurrences of violence or aggression)	Page:	25 of 2
		Issue:	V3a
		Issue date:	Dec 2018
		Form No.:	HST/12

This form is to be used by all Departments for the recording of all accidents. A copy of this 1<sup>st</sup> page must be given to the injured person if requested.  
The form is intended for accident prevention and statistical purposes, and to comply with the Department for Work & Pensions requirements.

**Department** \_\_\_\_\_

**Section/School/Establishment:** \_\_\_\_\_

### 1. Injured Person

☐ Employee   ☐ Public   ☐ Agency   ☐ Contractor   ☐ Volunteer   ☐ Service User  
☐ Pupil

Forename: \_\_\_\_\_ Surname: \_\_\_\_\_  
Address: \_\_\_\_\_ Age: \_\_\_\_\_  
Telephone: \_\_\_\_\_  
No: \_\_\_\_\_  
Postcode: \_\_\_\_\_ Occupation: \_\_\_\_\_

### 2. Accident/Incident Details

☐ Accident   ☐ Incident (e.g. Violence & Aggression)   ☐ Near Miss  
☐ Cyber Abuse

Date: \_\_\_\_\_ Time: \_\_\_\_\_

Location (inc. address & postcode): \_\_\_\_\_

Description of accident/incident (continue on separate sheet if needed): \_\_\_\_\_

Was the employee engaged in work at the time of the accident/incident? ☐ Yes   ☐ No

Has the injured person been off or unable to do their normal work for more than 7 days, including weekends, as a result of the accident/incident? ☐ Yes   ☐ No

Dates of absence: from: \_\_\_\_\_ to: \_\_\_\_\_ or Still Absent? ☐ Yes   ☐ No

### 3. Injury Details

Nature of the injury (e.g. fracture, sprain, cut etc...): \_\_\_\_\_

Part of the body (Indicate L or R where necessary): \_\_\_\_\_

First aid given by (inc post): \_\_\_\_\_

First aid treatment given (i.e. compress, plaster): \_\_\_\_\_

Was the injured person taken to hospital from the scene: ☐ Yes   ☐ No

Were they detained: ☐ Yes   ☐ No   If yes how long for in days? \_\_\_\_\_

### 4. Witnesses

Name: \_\_\_\_\_ Name: \_\_\_\_\_

Address: \_\_\_\_\_ Address: \_\_\_\_\_

Contact No: \_\_\_\_\_ Contact No: \_\_\_\_\_

### 5. Report Details

Accident reported to (i.e. Manager, supervisor, 1<sup>st</sup> Aider (inc name)): \_\_\_\_\_

Contact details of person reported to (dept & tel no): \_\_\_\_\_

Accident reported by (if different from section 1, inc post): \_\_\_\_\_

Reported on (date): \_\_\_\_\_ Time: \_\_\_\_\_

Signed by injured person:	
For social care only	CQC informed: <input type="checkbox"/> Yes <input type="checkbox"/> No Date:
Trade Union Safety Representative informed	<input type="checkbox"/> Yes <input type="checkbox"/> No Date:
<b>6. Signature of Manager/Supervisor/Responsible Person</b>	
Signed: _____	Print: _____
Date: _____	_____

**This page is Confidential to the department and the Health, Safety and Wellbeing Team (HSWT)**

<b>7. Accident Investigation (to be completed by manager/supervisor/responsible person)</b>	
Carried out by:	
Position/occupation:	
Contact No:	
How did the accident/incident happen, and what has been done to prevent reoccurrence?	
Does the risk assessment require updating? And do you need to provide additional information instruction or training to the member of staff? <input type="checkbox"/> Yes <input type="checkbox"/> No	
If Yes, what additional control measures are needed / recommended?	
In cases of violence/aggression/threats or Cyber abuse what action will be taken to support the individual/ prevent reoccurrence? <input type="checkbox"/> Yes <input type="checkbox"/> No	
Detail what action has been taken:	
Signed: _____	Date: _____

**Please forward this form and any attachments to the Health, Safety and Wellbeing Team,**

<b>8. For Internal HSWT use only</b>	
Accident Code:	
Reported to the HSE: <input type="checkbox"/> Yes <input type="checkbox"/> No	if <b>Yes</b> report reference no:
Reported by: Officer _____	Date: _____
Comments:	
Signed by HSWP: _____ Date: _____	

**This form can be emailed to: [CHST@bolton.gov.uk](mailto:CHST@bolton.gov.uk) Helpline: 01204 33(6968)**