



## **Sharing of Nude & Semi Nude Images**

<b>Policy Reviewed:</b>	<b>September 2022</b>
<b>Next Review:</b>	<b>September 2023</b>
<b>Signature of Chair of Trust Board:</b>	<b>Signature of Executive Head teacher:</b>
<b>Craig Graham</b>	<b>Lisa Whittaker</b>

# **KEEPING CHILDREN SAFE IN EDUCATION**

## **EDUCATION**

### **SAFEGUARDING PRACTICE GUIDANCE:**

#### **Responding to sharing nudes and semi-nude images and videos**

**Version:** 2

**Author:** Safeguarding in Education Team

## **What is the purpose of the guidance?**

This practice guidance has been written to assist the Designated Safeguarding Lead for Child Protection (DSL) in dealing with incidents of sharing nude or semi-nude images, to ensure effective safeguarding practice. The guidance should be read in conjunction with the school/college Safeguarding and Child Protection Policy, the UKCCIS (UK council for child internet safety) and [Sharing nudes and semi-nudes: advice for education settings working with children and young people](#).

## **Who is it for and when should it be used?**

The guidance is relevant to staff working with children under the age of 18. The guidance should be used when education setting become aware of nudes and semi-nude images and videos being shared.

## **‘Sharing nudes and semi-nudes’: definition**

This advice uses the term ‘sharing nudes and semi-nudes’ to mean the sending or posting of nude or semi-nude images, videos or live streams by young people under the age of 18 online. This could be via social media, gaming platforms, chat apps or forums. It could also involve sharing between devices via services like Apple’s AirDrop which works offline.

The term ‘nudes’ is used as it is most commonly recognised by young people and more appropriately covers all types of image sharing incidents. Alternative terms used by children and young people may include ‘dick pics’ or ‘pics’.

The motivations for taking and sharing nude and semi-nude images, videos and live streams are not always sexually or criminally motivated. Such images may be created and shared consensually by young people who are in relationships, as well as between those who are not in a relationship. It is also possible for a young person in a consensual relationship to be coerced into sharing an image with their partner. Incidents may also occur where:

- Children and young people find nudes and semi-nudes online and share them claiming to be from a peer
- Children and young people digitally manipulate an image of a young person into an existing nude online
- Images created or shared are used to abuse peers e.g. by selling images online or obtaining images to share more widely without consent to publicly shame

The sharing of nudes and semi-nudes can happen publicly online, in 1:1 messaging or via group chats and closed social media accounts.

Nude or semi-nude images, videos or live streams may include more than one child or young person.

Creating and sharing nudes and semi-nudes of under-18s (including those created and shared with consent) is illegal which makes responding to incidents involving children and young people complex. There are also a range of risks which need careful management from those working in education settings.

## **Sharing nude and semi-nude images - Steps to take when dealing with these incidents**

### **STEP 1: Becoming aware of an image**

Disclosures around sharing such images will follow normal safeguarding practices. A child or young person is likely to be very distressed, especially if the image has been circulated widely and if they don't know who has shared it, seen it or where it has ended up. They will need support during the disclosure and after the event. They may even need immediate protection or a referral to the Integrated Front Door.

The following questions will help decide upon the best course of action:

- Is the child disclosing about themselves receiving an image, sending an image or sharing an image?
- What sort of image is it? Is it potentially illegal or is it inappropriate?
- Are the Safeguarding Policy and practices being followed? For example, is the Designated Safeguarding Lead (DSL) on hand and is their advice and support available?
- How widely has the image been shared and is the device in their possession?
- Is it a school/college device or a personal device?
- Does the child need immediate support and/or protection?
- Are there other children and/or young people involved?
- Do they know where the image has ended up?

The situation will need to be handled very sensitively to ensure the Safeguarding and On-line Safety policies and practices are adhered to.

### **STEP 2: Searching a device – what are the rules?**

It is highly likely that the image will have been created and potentially shared through mobile devices. It may be that the image is not on one single device: it may be on a website or on a multitude of devices; it may be on either a school/college-owned or personal device. It is important to establish the location of the image but be aware that this may be distressing for the young person involved, so be conscious of the support they may need.

The revised Education Act 2011 brought significant new powers and freedoms for teachers and education settings. Essentially, the Act gives schools/colleges and/or teachers the power to seize and search an electronic device if they think there is good reason for doing so.

A device can be examined, confiscated, and securely stored if there is reason to believe it contains indecent images or extreme pornography.

When searching a mobile device, the following conditions should apply:

- The search is conducted by the Head Teacher, or a person authorised by them
- The DSL or a deputy is present
- The search is conducted by a member of the same sex
- If any illegal images of a child are found, you should consider whether to inform the police. Any conduct involving, or possibly involving, the knowledge or participation of adults should always be referred to the police. If an “experimental” incident is not referred to the police, the reasons for this should be recorded in writing. Always put the child first
- Do not search the device if this will cause additional stress to the child/person whose image has been distributed

### **Always:**

- Inform the school’s Designated Safeguarding Lead
- Record the incident
- Act in accordance with school Safeguarding Policy and procedures
- Inform relevant senior management team about the alleged incident before searching a device

### **Never:**

- Search a mobile device even in response to an allegation or disclosure if this is likely to cause additional stress to the child UNLESS there is clear evidence to suggest that there is an immediate problem
- Print out any material for evidence
- Move any material from one storage device to another

### **STEP 3 - What to do and not do with the image.**

If the image has been shared across a personal mobile device:

#### **Always:**

- Confiscate and secure the device(s)

#### **Never:**

- Send, share, copy or save the image anywhere
- Allow children to do any of the above

If the image has been shared across a school network, a website or a social network:

### **Always:**

- Block the network to all users and isolate the image

### **Never:**

- Send, share, copy or save the image
- Move the material from one place to another
- View the image without consultation with the DSL or without another member of staff present

### **STEP 4 - Who should deal with the incident?**

Whoever the initial disclosure is made to will act in accordance with the Safeguarding Policy, ensuring that the Designated Safeguarding Lead (DSL) or a deputy DSL are involved in dealing with the incident. The DSL will always record the incident using the school's safeguarding recording system.

### **STEP 5 - Deciding on a response**

There may be a multitude of reasons why an image has been shared – it may be a romantic/sexual exploration scenario or it may be due to coercion. It is important to remember that it won't always be appropriate to inform the police; this will depend on the nature of the incident. However, it is important that incidents are consistently recorded. It may also be necessary to assist the young person in removing the image from a website or elsewhere.

### **Actions that will be taken/considered:**

- Act in accordance with the school's Safeguarding Policy
- Store the device securely
- Contact the Safeguarding in Education Team for advice (01204 337472/331314)
- Offer support by carrying out a holistic Early Help Assessment
- Contact the police (if appropriate)
- Contact The Integrated Front Door (01204 331500)
- Put the necessary safeguards in place for the child, e.g. they may need counselling support, immediate protection
- Carry out work with the individual, class, year group, whole school. Use resources such as [so-you-got-naked-online.pdf](https://www.swgfl.org.uk/so-you-got-naked-online.pdf) ([swgfl.org.uk](https://www.swgfl.org.uk))
- Parents will be informed unless doing so would place the child at risk of further harm
- Inform parents and/or carers about how it is being managed

## **STEP 6 – Removing an image**

To remove a nude image shared online: [Report Remove: Remove a nude image shared online | Childline](#)

### **How does Report Remove work?**

1. Young people aged 13+ are first directed to Yoti to verify their age using ID (our legal remit means we can only remove images of children.) Children aged under 13 do not need to prove their age
2. Once children have proved they are younger than 18, they are prompted to create a Childline account, which allows them to be safeguarded and supported throughout the process
3. Young people are then taken to a dedicated IWF portal where they can securely upload images, videos or URLs (website addresses)
4. IWF analysts assess the reported content and take action if it meets the threshold of illegality\*. The content is given a unique digital fingerprint (a hash) which is then shared with internet companies to help prevent the imagery from being uploaded or redistributed online
5. The outcome will be conveyed to Childline who will then contact the young person via their Childline account to keep them updated and offer further support

### **Reporting**

In the case of nude or semi-nude images involving a child or young person where we feel that they may be at risk of abuse, then we will report the incident directly to [CEOP](#) (Child Exploitation and on line Protection) so that law enforcement can make an assessment, expedite the case with the relevant provider and ensure that appropriate action is taken to safeguard the child.

We report any criminal content here: [Homepage | Internet Watch Foundation \(iwf.org.uk\)](#)

### **Guidance and support**

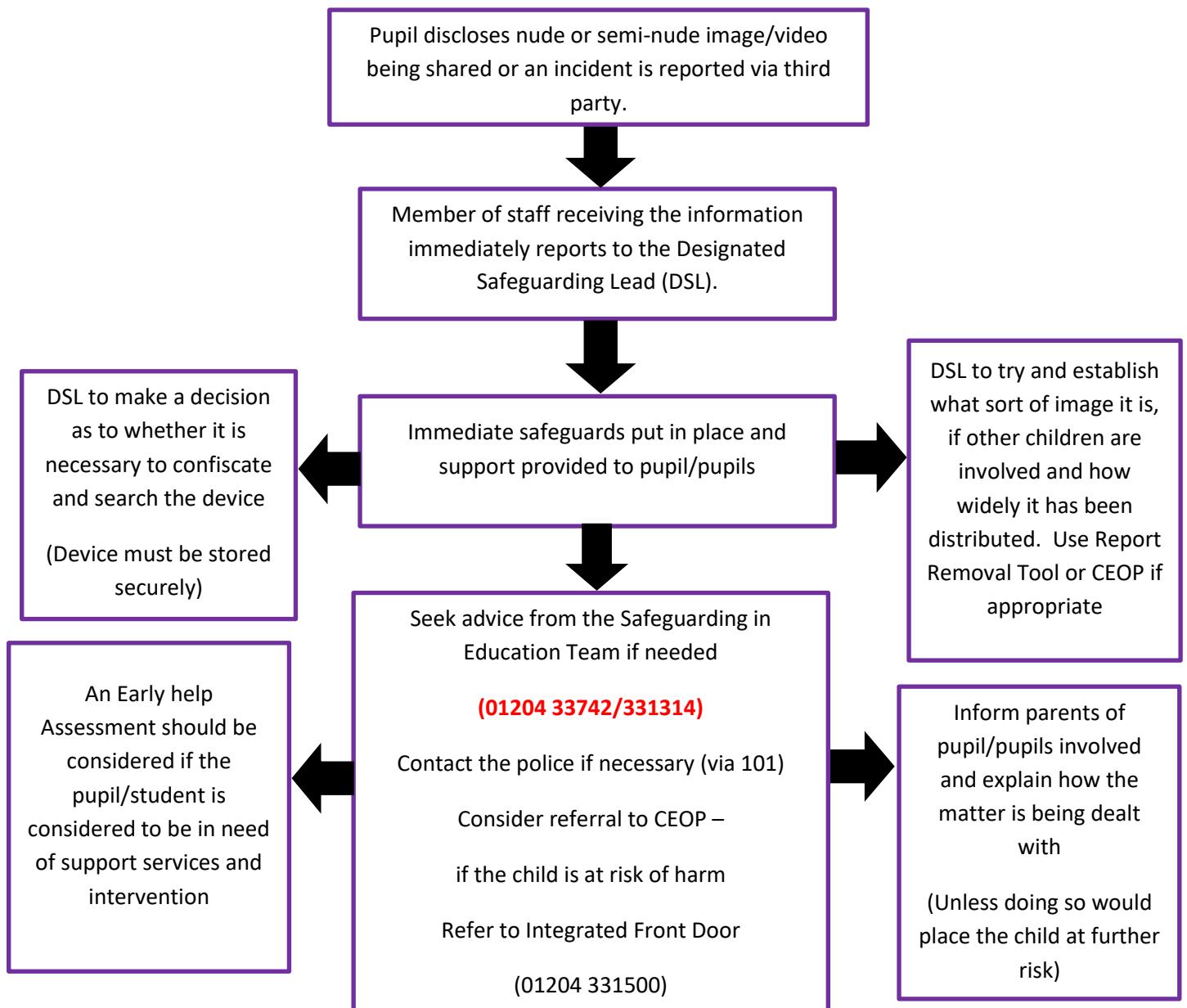
At [Homepage - UK Safer Internet Centre](#) the following is available:

A professional's helpline  
Assistance to report harmful content  
A revenge porn helpline

Further guidance can be found here: [Sexting: what you should know | Internet Matters](#)



## Responding to a report of a nude or semi-nude image beings shared flowchart



### If searching a device DO NOT:

- Send, share, copy or save the image
- Move the material from one place to another
- Do this alone, always do this with another member of staff present

**NB: If the image has been shared via the school/college network block the network to all users and isolate the image**